





Muvtons: The Company

Muvtons Castors was established by Mr. Bhagwan Singh in 1977 with one simple vision: To manufacture Wheels & Castors that surpass all expectations of quality and performance. Today, having grown to become industry leaders in wheels & castors. We remain committed to that vision as strongly as ever. We offer the most comprehensive range of solutions for our customers; our products can ferry loads from 100 Kg up to 50 tonnes, and are available in a variety of materials and configurations to fulfil every tenable requirement. We perform an application study before recommending mobility solutions, employ automated machinery and advanced manufacturing processes, and undertake rigorous in-house product testing to ensure that your investment performs impeccably for years to come.



BDS Medium Duty Pressed Steel Castors

- ✎ Extra Heavy Duty Thick Pressed Steel: Dynamically Pressed to ensure low swivel head play & long service life.
- ✎ Swivel Raceways with Double Ball Bearing to ensure High Load Bearing Capacities.
- ✎ Kingpinless Swivel Heads in large wheel diameters to eliminate chances of kingpin failure.

 Max Load Capacity
450 kg

WHEEL OPTIONS



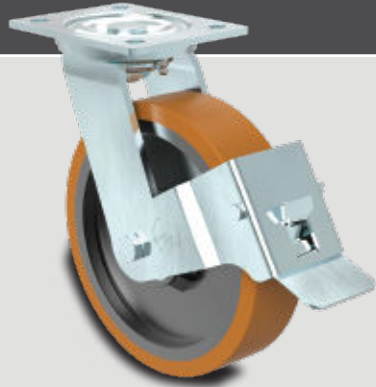
PNY

SJAL

SJS

MEJ

NY



GGSE-PS Press Steel Kingpin Type Castors

- ✎ Heavy Duty 5 mm thick stamped and formed top plate with a robust welded kingpin.
- ✎ Sealed Dual Ball Bearing Raceways for swivel head longevity.
- ✎ Stamped and coined Raceways for smooth swivel head movements.
- ✎ Fork Legs: Robotically welded.

 Max Load Capacity
500 kg

WHEEL OPTIONS



SAS

PNY

MEJ

SJAL

SJS

Note: Plate size 160x115 mm also available. Use prefix U20/GGS/PS



GGSE Forged Kingpin Type Castors

- ✎ Forged: Single piece alloy steel top plate with integrally forged kingpin for a robust design.
- ✎ Induction hardened, precision CNC Machined & sealed Double Ball Bearing Raceways for swivel head longevity.
- ✎ Forged Lower Raceways.
- ✎ Fork Legs: Robotically welded inside & outside.

 Max Load Capacity
600 kg

WHEEL OPTIONS



SAS

SZS-HR-AL

ME-HR

ME-SFS

SFS

MEJ

SJAL

SEB



GHKE Forged Kingpinless Castors

- ✎ Forged: Single piece alloy steel top plate and Fork Base for a robust design.
- ✎ Induction hardened, precision CNC Machined Raceways for swivel head longevity.
- ✎ Totally Sealed Swivel Head with Grease Nipple.
- ✎ Fork Legs: Robotically welded inside & outside.

 Max Load Capacity
900 kg

WHEEL OPTIONS



SAS

SZS-HR-AL

SZS-HR-CI

SZS-HR-TT

ME-HR

MF-SFS

SFS

SEB

MCI



GRDE Forged Kingpinless Castors

- ✎ Forged: Single piece alloy steel top plate and Fork Base for a robust design.
- ✎ Induction hardened, precision CNC Machined Raceways for swivel head longevity.
- ✎ Totally Sealed Swivel Head with Grease Nipple.
- ✎ Fork Legs: Cylindrically formed Robotically welded inside & outside.

 Max Load Capacity
1500 kg

WHEEL OPTIONS



SAS

SZS-HR-CI

SZS-HR-TT

ME-HR

SFS

SEB

MCNY

MCI

GRDDE Forged Twin-Wheel Kingpinless Castors



- 🔧 Forged: Single piece alloy steel top plate and Fork Base for a robust design.
- 🔧 Induction hardened, precision CNC Machined Raceways for swivel head longevity.
- 🔧 Totally Sealed Swivel Head with Grease Nipple.
- 🔧 Fork Legs: Cylindrically formed Robotically welded inside & outside.

 Max Load Capacity
1500 kg

WHEEL OPTIONS



SAB Forged Precision Bearing Kingpin Type Castors



- 🔧 Forged: Single piece alloy steel top plate with integrally forged kingpin and forged fork base.
- 🔧 Totally Sealed Swivel Head with grease nipple.
- 🔧 Swivel Head: Combination of precision thrust bearing & tapered roller bearing.
- 🔧 Slotted Nut & Cotter pin arrangement to adjust swivel head play during use.

 Max Load Capacity
1500 kg

WHEEL OPTIONS



ABLP Forged Precision Bearing Kingpin Type Castors



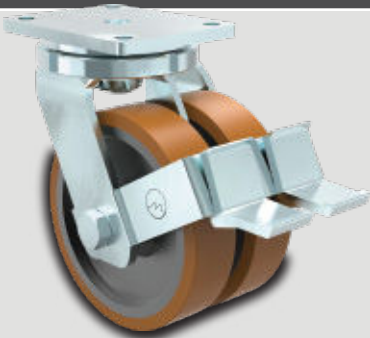
- 🔧 Forged: Single piece alloy steel top plate with an integrally forged kingpin and forged fork base.
- 🔧 Totally sealed swivel head with grease nipple.
- 🔧 Swivel Head: Combination of Precision Thrust Bearing & Tapered Bearing.
- 🔧 Slotted nut & cotter pin arrangement to adjust swivel head play during usage.

 Max Load Capacity
3000 kg

WHEEL OPTIONS



DABLP Forged Twin-Wheel Precision Bearing Kingpin Type Castors



- 🔧 Forged: Single piece alloy steel top plate with an integrally forged kingpin and forged fork base.
- 🔧 Totally Sealed Swivel Head with grease nipple.
- 🔧 Combination of precision Thrust Bearing & Roller Bearing in Swivel Head.
- 🔧 Slotted Nut & Cotter Pin arrangement to adjust swivel head play during usage.

 Max Load Capacity
3000 kg

WHEEL OPTIONS



ABE50 Forged Precision Bearing Kingpin Type Castors



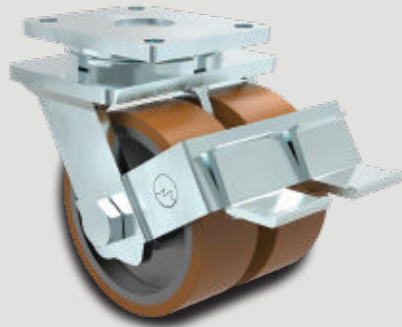
- 🔧 Forged: Single piece alloy steel top plate with an integrally forged kingpin and forged fork base.
- 🔧 Totally sealed swivel head with grease nipple.
- 🔧 Swivel Head: Combination of Precision Thrust Bearing & Tapered Roller Bearing.
- 🔧 Slotted nut & cotter pin arrangement to adjust swivel head play during usage.

 Max Load Capacity
5000 kg

WHEEL OPTIONS



DABE50 Forged Twin-Wheel Precision Bearing Kingpin Type Castors



- ✎ Forged: Single piece alloy steel top plate with an integrally forged kingpin and forged fork base.
- ✎ Totally sealed swivel head with grease nipple.
- ✎ Swivel Head: Combination of Precision Thrust Bearing & Tapered Roller Bearing.
- ✎ Slotted nut & cotter pin arrangement to adjust swivel head play during usage.

 Max Load Capacity
5000 kg

WHEEL OPTIONS



SAS

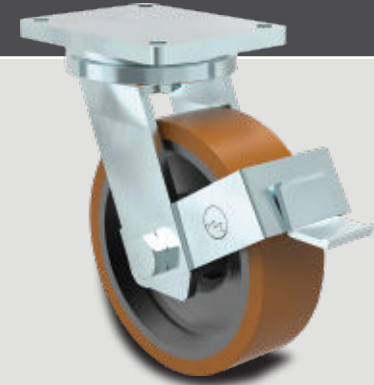
SZS-HR-TT

SFS

MCNY

DF

ABE75 Forged Precision Bearing Kingpin Type Castors



- ✎ Forged: Single piece alloy steel top plate with an integrally forged kingpin and forged fork base.
- ✎ Totally sealed swivel head with grease nipple.
- ✎ Combination of Precision Thrust Bearing & Tapered Roller Bearing in the Swivel Head.
- ✎ Slotted nut & cotter pin arrangement to adjust swivel head play during usage.

 Max Load Capacity
7500 kg

WHEEL OPTIONS



SAS

SZS-HR-TT

SFS

MCNY

DF

DABE75 Forged Twin-Wheel Precision Bearing Kingpin Type Castors



- ✎ Forged: Single piece alloy steel top plate with an integrally forged kingpin and forged fork base.
- ✎ Totally Sealed Swivel Head with grease nipple.
- ✎ Combination of precision Thrust Bearing & Roller Bearing in Swivel Head.
- ✎ Slotted Nut & Cotter Pin arrangement to adjust swivel head play during usage.

 Max Load Capacity
7500 kg

WHEEL OPTIONS



SAS

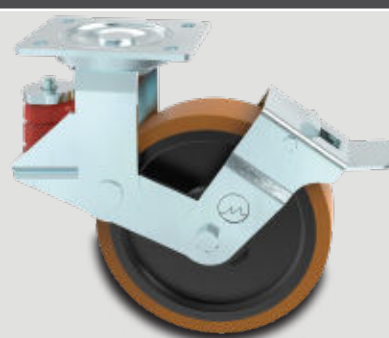
SZS-HR-TT

SFS

MCNY

DF

GGSE-PS-SPR Pressed Steel Spring-Loaded Kingpin Type Castors



- ✎ Heavy Duty 5 mm thick stamped and formed top plate with a robust welded kingpin.
- ✎ Sealed Dual Ball Bearing Raceways for swivel head longevity.
- ✎ Stamped and coined Raceways for smooth swivel head movements.
- ✎ Fork Legs: Robotically welded.

 Max Load Capacity
500 kg

WHEEL OPTIONS



SAS

SFS

MEJ

SJAL

Note: Plate size 160x115 mm also available. Use prefix U20/GGS/PS-SPR

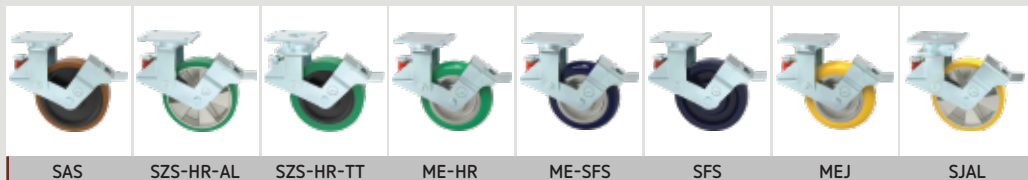
GGSE-SPR Spring-Loaded Forged Kingpin Type Castors



- ✎ Forged: Single piece alloy steel top plate with an integrally forged kingpin for robust design.
- ✎ Induction hardened and precision CNC Machined Raceways for swivel head longevity.
- ✎ Strong Elastomeric Spring Elements designed for specific load range to ensure Uniform Cushion Effect unlike Stiff Steel Springs.

 Max Load Capacity
600 kg

WHEEL OPTIONS



SAS

SZS-HR-AL

SZS-HR-TT

ME-HR

ME-SFS

SFS

MEJ

SJAL

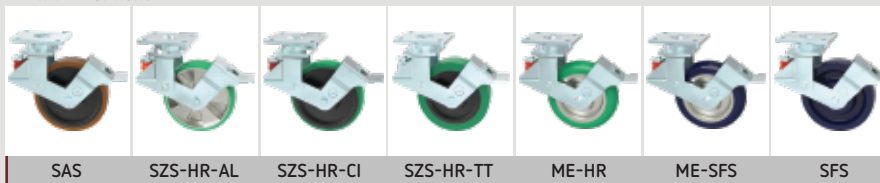
GHKE-SPR Spring-Loaded Forged Kingpinless Castors



- ⌘ Forged: Single piece alloy steel top plate and fork base for a robust design.
- ⌘ Induction hardened & precision CNC Machined Raceways for swivel head longevity.
- ⌘ Totally Sealed Swivel Head with Grease Nipple.
- ⌘ Fork legs: Robotically welded inside & outside.

Max Load Capacity
900 kg

WHEEL OPTIONS



SS- Stainless steel Medium duty Castors for Food Industry



- ⌘ Stainless Steel 304 Grade Construction.
- ⌘ Totally Sealed Swivel Head with Grace Nipple.
- ⌘ Swivel Raceways with double Ball Bearing To Ensure High Load Bearing Capacities.

Max Load Capacity
900 kg

WHEEL OPTIONS



ETG- Medium Duty Castors for Textile Industry



- ⌘ Add Thread Guard Safety.
- ⌘ Completely Prevents Thread & Yarn Build-up in the Castor.
- ⌘ Eliminates the need for daily cleaning of yarn & fluff build-up.
- ⌘ Leading to massive savings on maintenance costs.

Max Load Capacity
600 kg

WHEEL OPTIONS



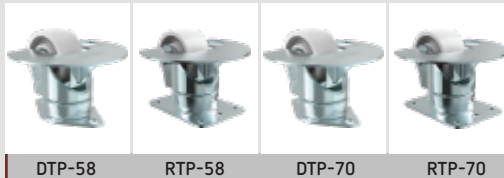
BMS Air Cargo Inverted Castors



- ⌘ Exceptionally Strong 3mm Thick Construction.
- ⌘ Sealed Precision Ball Bearing in Swivel Head to ensure longevity.
- ⌘ Exceptionally Strong, Shock Resistant Nylon 66 Wheels.
- ⌘ Metal Thread Guards.

Max Load Capacity
250 kg

WHEEL OPTIONS



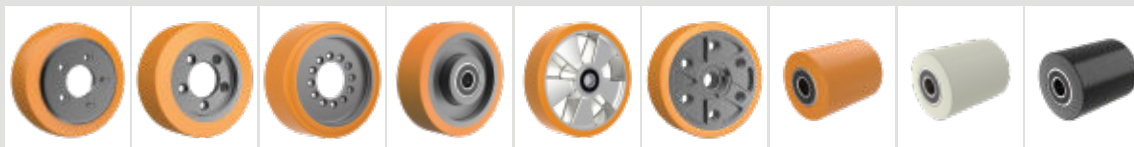
DRIVE WHEELS & ROLLERS



- ⌘ High Performance Polyurethane Wheels.
- ⌘ Wear & Tear Resistant.
- ⌘ Cast Iron Wheel Center.

Max Load Capacity
Upto 5000 kg

WHEEL OPTIONS



REFER FORKLIFT & PALLET TRUCK WHEEL CATALOGUE FOR DETAILS

Wheel + Castor Load Capacity Guide


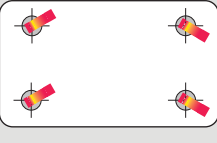
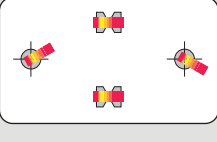
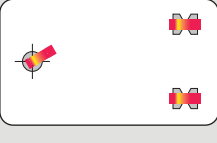
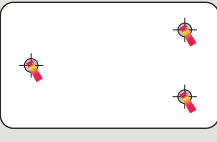
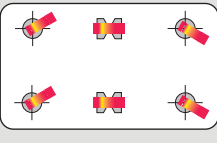
LOAD CAPACITIES

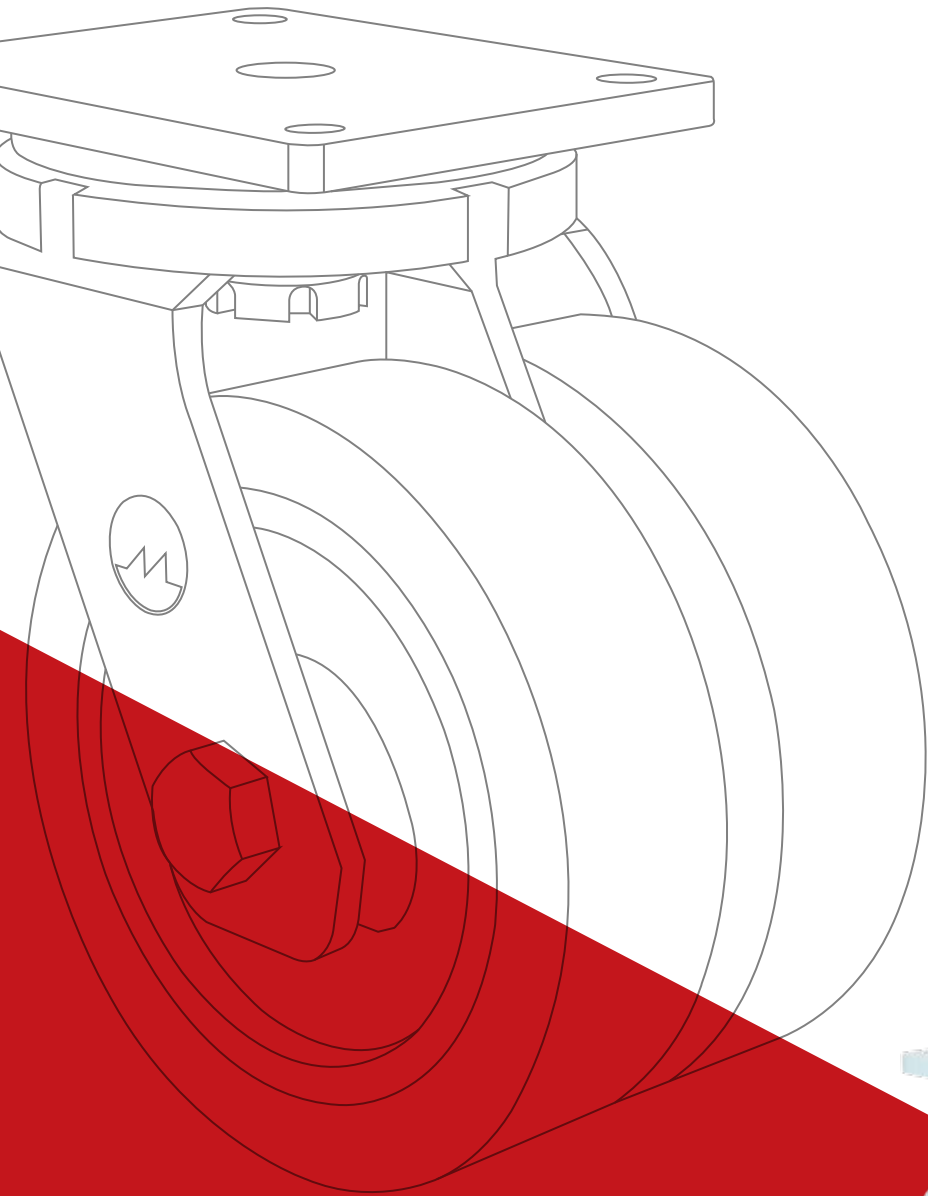
Capacities given in this catalogue are based on normal working conditions on reasonably level floors free from grooves, breaks, door sills, lift entrances and other hazards. They are also based on a maximum speed of 4km/h unless otherwise stated as per ISO 22883.

Although Muvtons Wheels and Castors have high capacity reserves, we recommend the use of the following general formula to determine the load capacity:

$$\frac{\text{Weight of transport equipment + load}}{3}$$

CALCULATION OF TOTAL LOAD CAPACITY FOR DIFFERENT CASTOR ARRANGEMENT

| TYPE OF CASTOR ARRANGEMENT | CASTOR TYPE WHEEL | LOAD CALCULATION |
|---|------------------------------------|---------------------------|
|  | 2 Swivel Castors & 2 Fixed Castors | $\frac{\text{Load}}{3}$ |
|  | 4 Swivel Castors | $\frac{\text{Load}}{3}$ |
|  | 2 Swivel Castors / 2 Fixed Castors | $\frac{\text{Load}}{2}$ |
|  | 1 Swivel Castor & 2 Fixed Castors | $\frac{\text{Load}}{2.5}$ |
|  | 3 Swivel Castors | $\frac{\text{Load}}{2.5}$ |
|  | 4 Swivel Castors & 2 Fixed Castors | $\frac{\text{Load}}{2}$ |



MUVTONS CASTORS PVT. LTD.

C - 40, Phase- 2, Noida- 201305, INDIA

🌐 www.muvtons.com

✉ sales@muvtons.com

☎ +91- 991 02 67 000

☎ +91- 991 09 66 900